

# S-421T Wedge Sockets



**SEE APPLICATION AND WARNING INFORMATION**

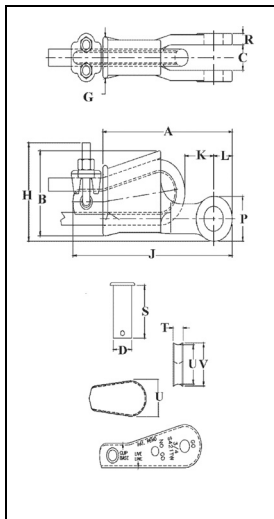
Para Español: [www.thecrosbygroup.com](http://www.thecrosbygroup.com) On Page 52

## S-421T



Wedge sockets meet the performance requirements of Federal Specification RR-S-550D, Type C, except those provisions required of the contractor. For additional information, see page 391.

- Wedge socket terminations have an efficiency rating of 80% based on the catalog strength of XXIP wire rope.
- Crosby products meet or exceed all requirements of ASME B30.26 including identification, ductility, design factor, proof load and temperature requirements. Importantly, Crosby products meet other critical performance requirements including fatigue life, impact properties and material traceability, not addressed by ASME B30.26.
- Type Approval and certification in accordance with ABS 2006 Steel Vessel Rules 1-1-17.7, and ABS Guide for Certification of Cranes.
- Basket is cast steel and individually magnetic particle inspected.
- Pin diameter and jaw opening allows wedge and socket to be used in conjunction with closed swage and spelter sockets.
- Secures the tail or "dead end" of the wire rope to the wedge, thus eliminates loss or "Punch out" of the wedge.
- Eliminates the need for an extra piece of rope, and is easily installed.
- The TERMINATOR™ wedge eliminates the potential breaking off of the tail due to fatigue.
- The tail, which is secured by the base of the clip and the wedge, is left undeformed and available for reuse.
- Incorporates Crosby's patented QUIC-CHECK® "Go" and "No-Go" feature cast into the wedge. The proper size rope is determined when the following criteria are met:
  - 1) The wire rope should pass thru the "Go" hole in the wedge.
  - 2) The wire rope should NOT pass thru the "No-Go" hole in the wedge.
- Utilizes standard Crosby Red-U-Bolt® wire rope clip.
- The 3/8" thru 1-1/8" standard S-421 wedge socket can be retrofitted with the new style TERMINATOR™ wedge.
- Available with Bolt, Nut, and Cotter Pin.
- U.S. patent 5,553,360, Canada patent 2,217,004 and foreign equivalents.



## S-421T Wedge Sockets Assembly includes Socket, Wedge, Pin and Wire Rope Clip

Wire Rope Dia.		S-421T Stock No.	Weight Each (lbs.)	S-421 TW Stock No. Wedge Only	Wedge Only Weight Each (lbs.)	Optional G-4082 Bolt, Nut & Cotter	
(in.)	(mm)					G-4082 Stock No.	Weight Each (lbs.)
3/8	9-10	1035000	3.18	1035555	.50	1092227	.38
1/2	11-13	1035009	6.15	1035564	1.05	1092236	.69
5/8	14-16	1035018	9.70	1035573	1.79	1092254	1.15
3/4	18-19	1035027	14.50	1035582	2.60	1092281	1.91
7/8	20-22	1035036	21.50	1035591	4.00	1092307	3.23
1	24-26	1035045	30.75	1035600	5.37	1092325	5.40
1-1/8	28	1035054	45.30	1035609	7.30	1092343	7.50
1-1/4	30-32	1035063	64.90	1035618	10.60	1092372	10.34

Wire Rope Dia.			Dimensions (in.)														
(in.)	(mm)	S-421T Stock No.	A	B	C	D	G	H	J*	K*	L	P	R	S	T	U	V
3/8	9-10	1035000	5.69	2.72	.81	.81	1.38	3.06	7.80	1.88	.88	1.56	.44	2.13	.44	1.25	1.38
1/2	11-13	1035009	6.88	3.47	1.00	1.00	1.62	3.76	8.91	1.26	1.06	1.94	.50	2.56	.53	1.75	1.88
5/8	14-16	1035018	8.25	4.30	1.25	1.19	2.12	4.47	10.75	1.99	1.22	2.25	.56	3.25	.69	2.00	2.19
3/4	18-19	1035027	9.88	5.12	1.50	1.38	2.44	5.28	12.36	2.41	1.40	2.63	.66	3.63	.78	2.34	2.56
7/8	20-22	1035036	11.25	5.85	1.75	1.63	2.69	6.16	14.37	2.48	1.67	3.13	.75	4.31	.88	2.69	2.94
1	24-26	1035045	12.81	6.32	2.00	2.00	2.94	6.96	16.29	3.04	2.00	3.75	.88	4.70	1.03	2.88	3.28
1-1/8	28	1035054	14.38	6.92	2.25	2.25	3.31	7.62	18.34	2.56	2.25	4.25	1.00	5.44	1.10	3.25	3.56
1-1/4	30-32	1035063	16.34	8.73	2.62	2.50	3.56	9.39	20.48	2.94	2.34	4.50	1.06	6.13	1.19	4.62	4.94

\* Nominal

NOTE: For intermediate wire rope sizes, use next larger size socket.