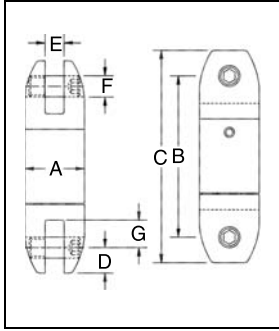


Crosby® Angular Contact Bearing Swivels

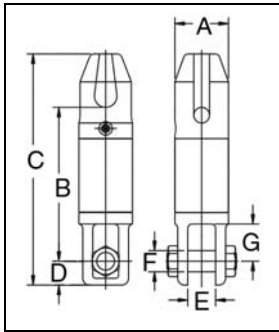
AS-7 Bullet Style Jaw & Jaw



| AS-7 BULLET STYLE JAW & JAW | | | | Dimensions (in.) | | | | | | |
|--------------------------------|----------------------|----------------|--------------------|---------------------|-------|-------|------|------|------|------|
| Working Load Limit (Tons)* | Wire Line Size (in.) | AS-7 Stock No. | Weight Each (lbs.) | A | B | C | D | E | F | G |
| .45 | 1/8 | 1016604 | .4 | .88 | 2.38 | 3.13 | .38 | .25 | .31 | .40 |
| .75 | 1/4 | 1016611 | 1.1 | 1.31 | 3.56 | 4.44 | .44 | .31 | .38 | .56 |
| 1.5 | 3/8 | 1016622 | 1.8 | 1.63 | 4.06 | 5.19 | .56 | .50 | .44 | .81 |
| 3.0 | 1/2 | 1016631 | 3.8 | 2.00 | 5.44 | 7.06 | .81 | .75 | .63 | .94 |
| 5.0 | 5/8 | 1016640 | 8.0 | 2.50 | 7.75 | 10.06 | 1.13 | 1.00 | .88 | 1.56 |
| 8.5 | 3/4 | 1016649 | 14.5 | 3.00 | 9.88 | 12.38 | 1.25 | 1.31 | 1.00 | 2.13 |
| 10 | 7/8 | 1016652 | 40.0 | 4.00 | 13.13 | 16.75 | 1.75 | 1.75 | 1.50 | 3.25 |
| 15 | 1 | 1016658 | 40.0 | 4.00 | 13.13 | 16.75 | 1.75 | 1.75 | 1.50 | 3.25 |
| 25 | 1-1/4 | 1016662 | 84.0 | 5.00 | 15.94 | 20.75 | 2.38 | 2.00 | 2.00 | 3.69 |
| 35 | 1-1/2 | 1016667 | 84.0 | 5.00 | 15.94 | 20.75 | 2.38 | 2.00 | 2.00 | 3.69 |

* Ultimate Load is 5 times the Working Load Limit.
Individually Proof Tested to 2 times the Working Load Limit.

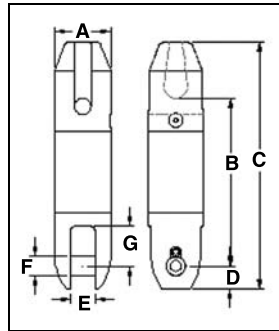
AS-11 Thimble & Jaw



| AS-11 THIMBLE & JAW | | | | Dimensions (in.) | | | | | | |
|----------------------------|----------------------|-----------------|--------------------|---------------------|-------|-------|------|------|------|------|
| Working Load Limit (Tons)* | Wire Line Size (in.) | AS-11 Stock No. | Weight Each (lbs.) | A | B | C | D | E | F | G |
| 8.5 | 3/4 | 1017020 | 18.0 | 3.00 | 8.66 | 13.00 | 1.34 | 1.56 | 1.19 | 2.09 |
| 15 | 1 | 1017029 | 42.0 | 4.00 | 11.66 | 17.53 | 1.75 | 1.78 | 1.50 | 3.50 |

* Ultimate Load is 5 times the Working Load Limit.
Individually Proof Tested to 2 times the Working Load Limit.

AS-14 Thimble & Bullet

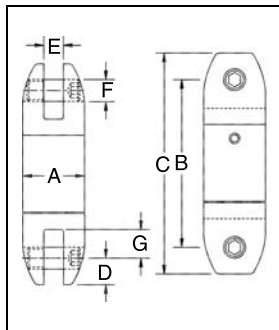


| AS-14 THIMBLE & BULLET | | | | Dimensions (in.) | | | | | | |
|----------------------------|----------------------|-----------------|--------------------|---------------------|-------|-------|------|------|------|------|
| Working Load Limit (Tons)* | Wire Line Size (in.) | AS-14 Stock No. | Weight Each (lbs.) | A | B | C | D | E | F | G |
| 8.5 | 3/4 | 1017255 | 20.0 | 3.00 | 9.00 | 13.25 | 1.25 | 1.31 | 1.00 | 2.13 |
| 15 | 1 | 1017258 | 40.0 | 4.00 | 11.50 | 17.38 | 1.75 | 1.75 | 1.50 | 3.25 |
| 25 | 1-1/4 | 1017261 | 81.0 | 5.00 | 14.31 | 21.19 | 2.38 | 2.00 | 2.00 | 3.69 |

* Ultimate Load is 5 times the Working Load Limit.
Individually Proof Tested to 2 times the Working Load Limit.

AS-17 Bullet Style Jaw & Jaw Slurry Swivel

- The Crosby AS-17 Slurry Swivel is a zinc plated Bullet Type Swivel (AS-7), designed with two rubber lip style seals about the shaft. The threaded cap is sealed with a silicone sealant and secured with a set screw. The swivels are provided with an Alemite grease fitting for easy lubrication.



| AS-17 BULLET JAW SLURRY SWIVEL | | | | Dimensions (in.) | | | | | | |
|-----------------------------------|----------------------|-----------------|--------------------|---------------------|-------|-------|------|------|------|------|
| Working Load Limit (Tons)* | Wire Line Size (in.) | AS-17 Stock No. | Weight Each (lbs.) | A | B | C | D | E | F | G |
| 8.5 | 3/4 | 8013342 | 14.5 | 3.00 | 10.13 | 12.63 | 1.25 | 1.31 | 1.00 | 2.13 |
| 15 | 1 | 8013343 | 40.0 | 4.00 | 13.50 | 17.00 | 1.75 | 1.75 | 1.50 | 3.25 |
| 25 | 1-1/4 | 8013376 | 84.0 | 5.00 | 16.16 | 20.92 | 2.38 | 2.00 | 2.00 | 3.69 |
| 35 | 1-1/2 | 8013344 | 84.0 | 5.00 | 16.16 | 20.92 | 2.38 | 2.00 | 2.00 | 3.69 |
| 45 | - | 2016585 | 150.0 | 6.00 | 20.25 | 26.25 | 3.00 | 2.53 | 2.25 | 2.75 |

* Ultimate Load is 5 times the Working Load Limit.
Individually Proof Tested to 2 times the Working Load Limit.